





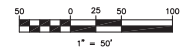
UTILITY & GOVERNING AGENCIES CONTACT LIST:

GAS	FIRE
	HEBRON FIRE PROTECTION DISTRICT
	DAVID PERKINS
	859-366-9009
SANITARY SEWER	ELECTRIC
SANITATION DISTRICT NO. 1	DUKE ENERGY
CARY AHAH	MIKE BELLOW
859-578-7467	513-287-5431
WATER	TELEPHONE
BOONE COUNTY WATER DISTRICT	
HARRY ANNESS	
859-586-1770	
VACANT	TRANSPORTATION
STORM SEWERS	KENTUCKY TRANSPORTATION CABINET
BOONE COUNTY PUBLIC WORKS	13 THIMMON
ERIC SKECH	859-341-2700
859-334-3600	

LEGEND

-  INDICATES PAINTED AREA
-  INDICATES TYPE 3 CURB & GUTTER (SEE DETAIL SHEET C4.0)
-  INDICATES HANDICAP SIGN (SEE DETAIL SHEET C4.0)
-  INDICATES NEW HEAVY DUTY PAVEMENT AREA (SEE DETAIL THIS SHEET)

GRAPHIC SCALE



toa
THOMAS GRAHAM ASSOCIATES, INC.
 • Engineers
 • Surveyors
 803 Compton Road
 Cincinnati, Ohio 45231
 513-521-4760
 Fax # 521-2439

Date: MAY 16, 2012
 Scale: 1" = 50'
 Job No: 7550

Revisions	
No.	Date

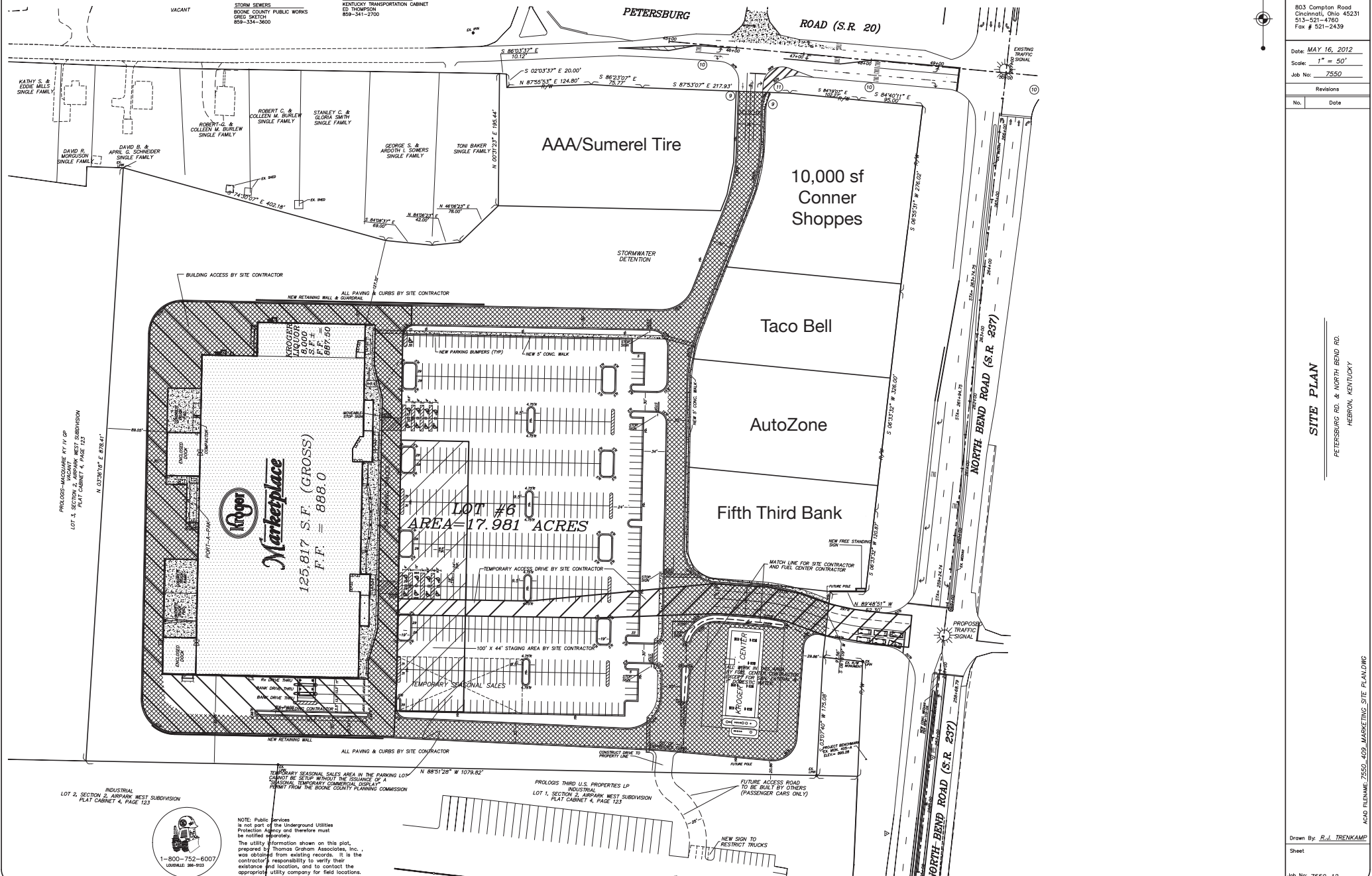
Revisions	
No.	Date

SITE PLAN

PETERSBURG RD. & NORTH BEND RD.
 HEBRON, KENTUCKY

Drawn By: E.J. TRENKAMP
 Sheet

Job No: 7550-12



NOTE: Public Services are not part of the Underground Utilities Protection Agency and therefore must be notified separately.
 The utility information shown on this plot, prepared by Thomas Graham Associates, Inc., was obtained from existing records. It is the contractor's responsibility to verify their existence and location, and to contact the appropriate utility company for field locations.

PROLOGS THIRD U.S. PROPERTIES LP
 INDUSTRIAL
 LOT 1, SECTION 2, AIRPARK WEST SUBDIVISION
 PLAT CABINET 4, PAGE 123

PROLOGS-MARKETING RT. 17, GP
 INDUSTRIAL
 LOT 3, SECTION 2, AIRPARK WEST SUBDIVISION
 PLAT CABINET 4, PAGE 123

INDUSTRIAL
 LOT 2, SECTION 2, AIRPARK WEST SUBDIVISION
 PLAT CABINET 4, PAGE 123

ACAD FILENAME: 7550-409-MARKETING_SITE PLAN.DWG